

Site Preparation Guide

Contichrom[®] CUBE

YMC

INTRODUCTION

This document details the laboratory requirements for the installation of the Contichrom CUBE system. It applies to both CUBE 30 and CUBE 100.

GENERAL REQUIREMENTS

Space and power outlet requirements are given for different hardware configurations below.

Power outlets must supply 110 V – 230 V, 50/60 Hz.

WASTE STREAM HANDLING

Generally, 60 cm (2 ft) clear space under the bench for liquid waste containers is recommended.

Waste container for different liquids (aqueous buffers, organics, ...) need to be supplied. Recommended size is ≥ 10 L. Waste containers are generally placed below the level of the CUBE, e.g. under the workbench.

OPTIONAL COMPUTER ACCESSORIES

The CUBE system is delivered with an All-in-One desktop computer including keyboard (typically Swiss layout) and mouse. If another keyboard layout is required, it needs to be supplied by the customer.

ENVIRONMENTAL CONDITIONS FOR OPERATION

The CUBE standard configuration must only be operated in the following range:

- Temperature +5 °C to +30 °C
- Relative humidity 20 – 80 %, non-condensing

Environmental operating conditions for other modules are available upon request.

ENVIRONMENTAL CONDITIONS FOR STORAGE BEFORE INSTALLATION

The unopened shipping box must be stored under the following conditions:

- Temperature +4 °C to +50 °C
- Relative humidity 20 – 95 %, non-condensing

SPACE AND POWER REQUIREMENTS

STANDARD CONFIGURATION

The standard configuration consists of the following units:

- CUBE system
- External multi-wavelength UV detectors
- Fraction collector
- Operating computer

It requires 8 power outlets. Additional accessories increase the number of required power outlets accordingly.

Its space requirement is the following:

- 1.8 m in width
- 75 cm in depth
- 1.1 m top clearance over bench

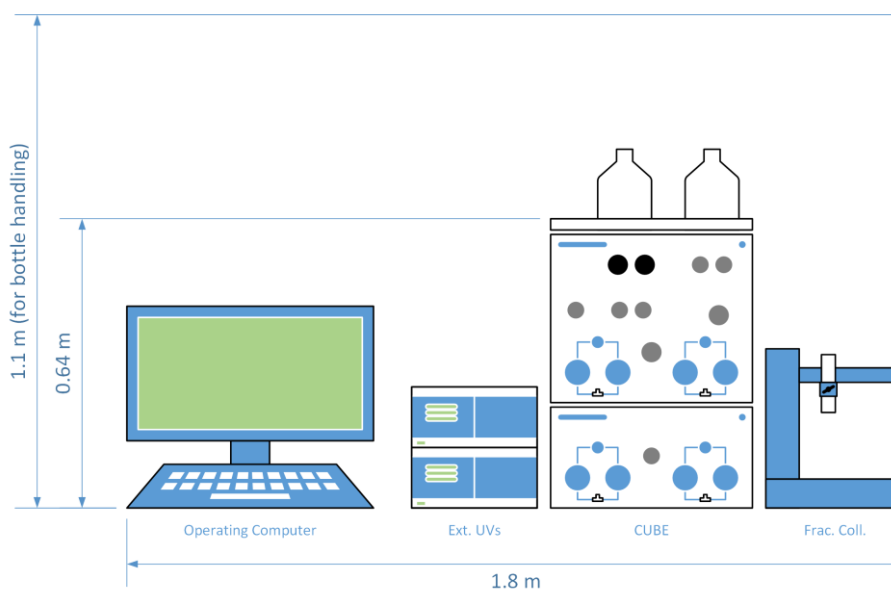


Figure 1 Space requirements of the CUBE standard configuration.

ADDITIONAL COLUMN THERMOSTATS

The additional column thermostats increase the requirements to the following:

- 10 power outlets
- 2.2 m in width
- 75 cm in depth
- 1.1 m top clearance over bench

Additional accessories increase the number of required power outlets accordingly.

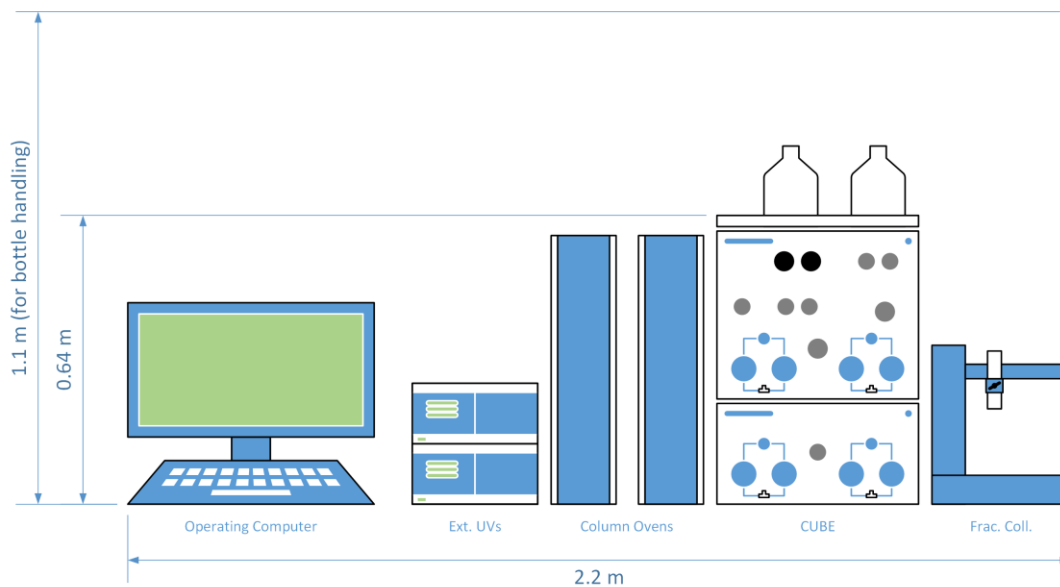


Figure 2 Space requirements with additional column thermostats.

ADDITIONAL COOLING CABINET

The additional cooling cabinet (housing the fraction collector) increases the requirements to the following:

- 8 power outlets
- 2.1 m in width
- 75 cm in depth
- 1.1 m top clearance over bench

Additional accessories increase the number of required power outlets accordingly.

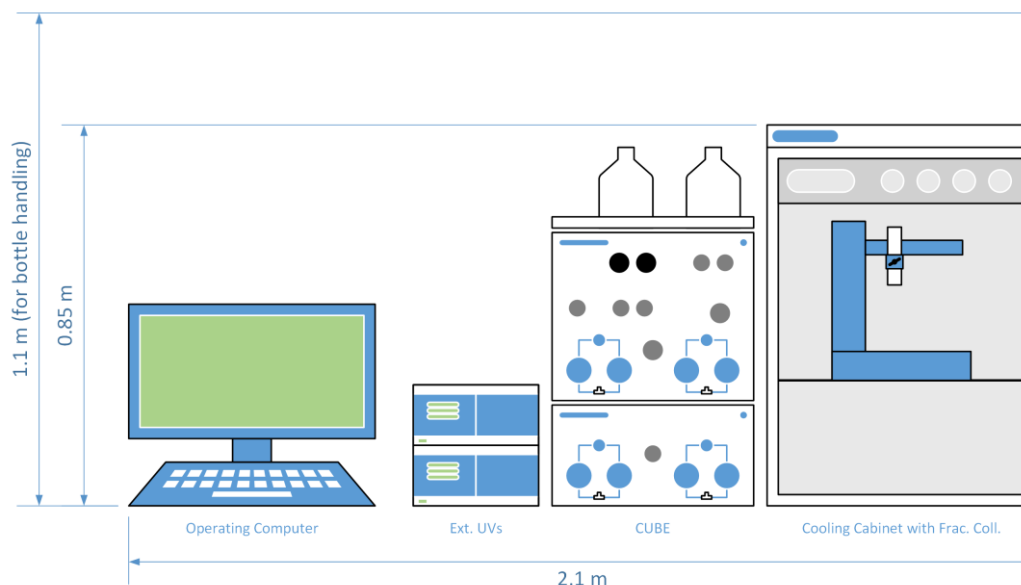


Figure 3 Space requirements with additional cooling cabinet housing the fraction collector.

ADDITIONAL ELUENT SELECTION VALVES FOR PUMP 1

The additional eluent selection valves for pump 1 increase the requirements to the following:

- 10 power outlets
- 2.0 m in width
- 75 cm in depth
- 1.1 m top clearance over bench

Additional accessories increase the number of required power outlets accordingly.

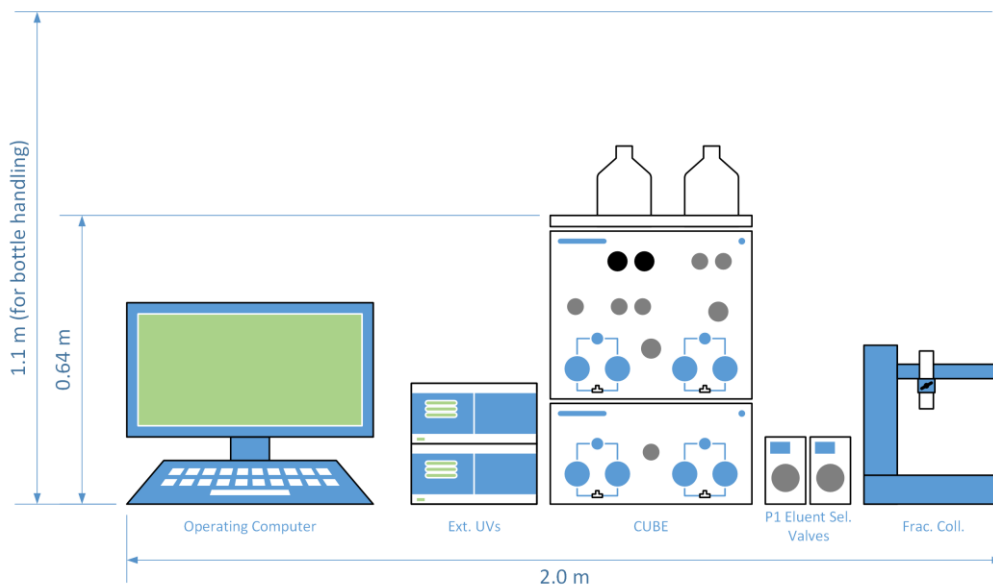


Figure 4 Space requirements with additional eluent selection valves for pump 1.

ADDITIONAL COLUMN OVENS AND COOLING CABINET

The additional column ovens and cooling cabinet increase the requirements to the following:

- 10 power outlets
- 2.5 m in width
- 75 cm in depth
- 1.1 m top clearance over bench

Additional accessories increase the number of required power outlets accordingly.

Please note that the cooling cabinet is not suitable for use with organic solvents.

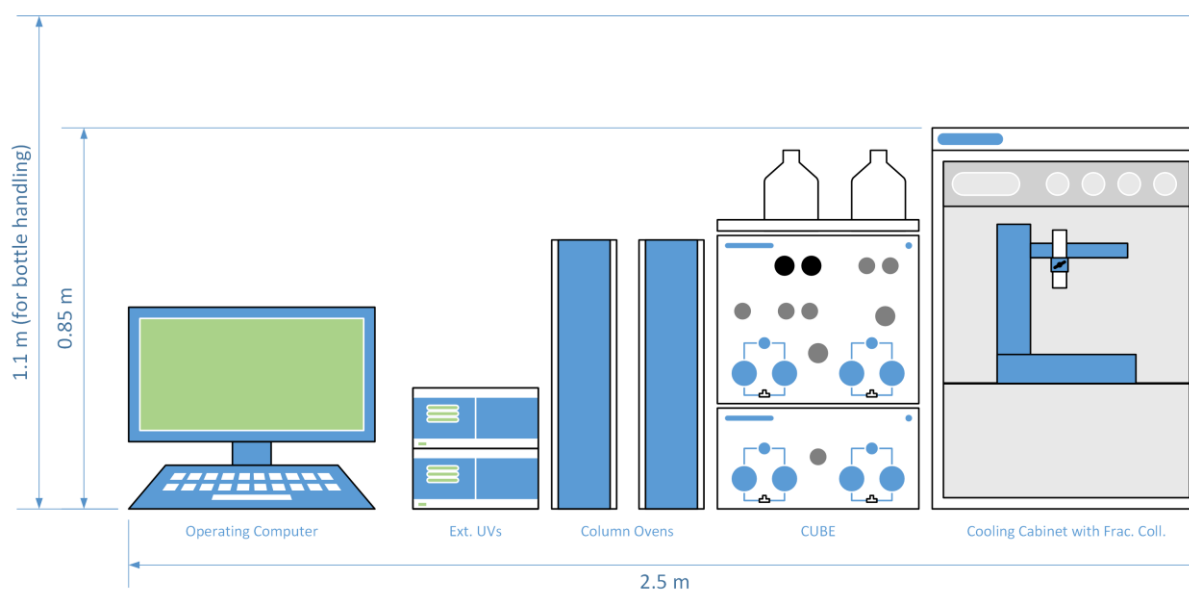


Figure 5 Space requirements with additional column ovens and cooling cabinet.

WEIGHT AND DIMENSIONS OF HARDWARE UNITS

Table 1 lists the weight and dimensions of the hardware units of the Contichrom CUBE systems.

Extending power and communication cords are not included in the depth values.

Please note that the column ovens require 5 – 10 cm space around them to allow for sufficient air exchange.

Table 1 Weight and dimensions of hardware units

Unit	Weight [kg]	Width [cm]	Height [cm]	Depth [cm]
CUBE unit	47 CUBE module: 30 CUBE+ module: 17	45	58.4 (64 with bottle tray)	45.6 (60 with mixing chamber)
External UV	7.5	28	13.5	46.3
Fraction collector (Foxy R1)	7.1	31	35.5	33
Fraction collector (Foxy R2)	10.3	31	37.8	53.3
Column oven	8.4	15	47	31
Cooling cabinet	48	60	85	60
External valve	2	8	12.3	Approx. 25 with head
Operating computer ¹⁾	Approx. 8	Approx. 55	Approx. 50	Approx. 25

1) Model depends on availability.